

# Kivikko

## SEATING SYSTEM

Design Henri Halla-aho

Kivikko is a multifunctional seating system ideal for creating versatile spaces for work, learning and relaxation for users of all ages. The Kivikko pouffes of different shapes and heights form a scenic arrangement of seating in any space and according to the need.

Kivikko seating system is an ecological, award-winning furniture: it was awarded with Nordic eco-label in 2017 and GESS Education Award 2019.

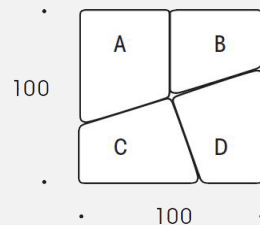
### Materials and finishing

Kivikko is made of recycled foam plastic. It's available in a wide variety of ISKU standard fabrics, as well as in leather if desired.

Kivikko is equipped either with glides or wheels as requested.

### Dimensions

One set of four 100 x 100cm  
Height options 26/40/54 cm



### Video

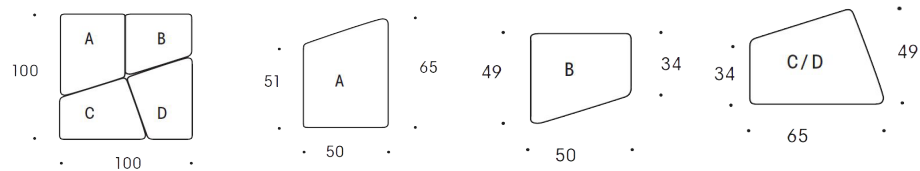


# Kivikko

## SEATING SYSTEM

### Datasheet

Kivikko pieces are always sold in sets of four and one set forms a meter x meter block.



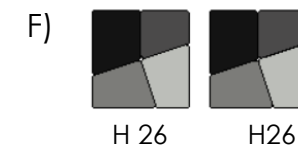
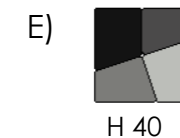
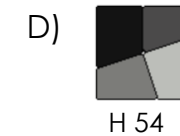
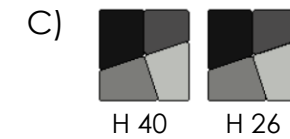
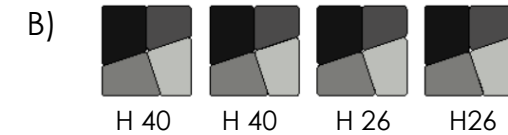
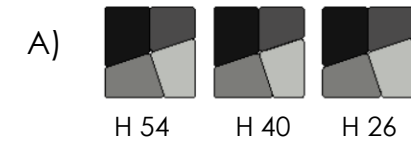
Upholstery can be chosen separately on each piece.

#### Amount of pieces in available sets:

- A) 4 high, 4 middle, 4 low
- B) 8 middle, 8 low
- C) 4 middle, 4 low
- D) 4 high
- E) 4 middle
- F) 8 low

#### Accessories:

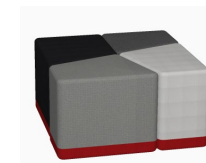
- Table top can be chosen from ISKU standard laminates. It is always on top of piece D and it is not removable (only with high and middle high pieces)
- Plinth can be chosen to be different color than the rest of the stool. When chosen, it comes to all pieces in one set.
- Wheels or glides



H= height of pieces in set



Table top



Plinth



Kivikko



GESS  
EDUCATION  
AWARDS  
WINNER  
2019

ISKU  
Since 1928

# Kivikko Table

## TABLE

Design Henri Halla-aho

Kivikko table is an easily movable small table top that can be combined not only with Kivikko seats, but also other lounge and office or school furniture.

The asymmetrical shape of the Kivikko table top follows that of Kivikko seats. The shape of the leg enables pulling the table close to the user, so it can be used for working with the laptop or writing.

### Materials and finishing

Frame	Powder coated steel (white or chrome)
Table top	Diagonal framed MDF-laminate

### Dimensions

Width	600 mm
Depth	450 mm
Height	550 mm or 730 mm

